

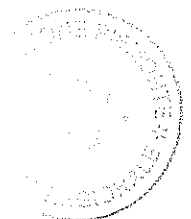
772 29 OTT. 2015

# ATTO AZIENDALE

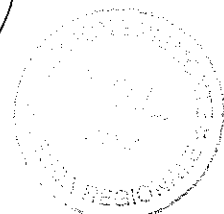
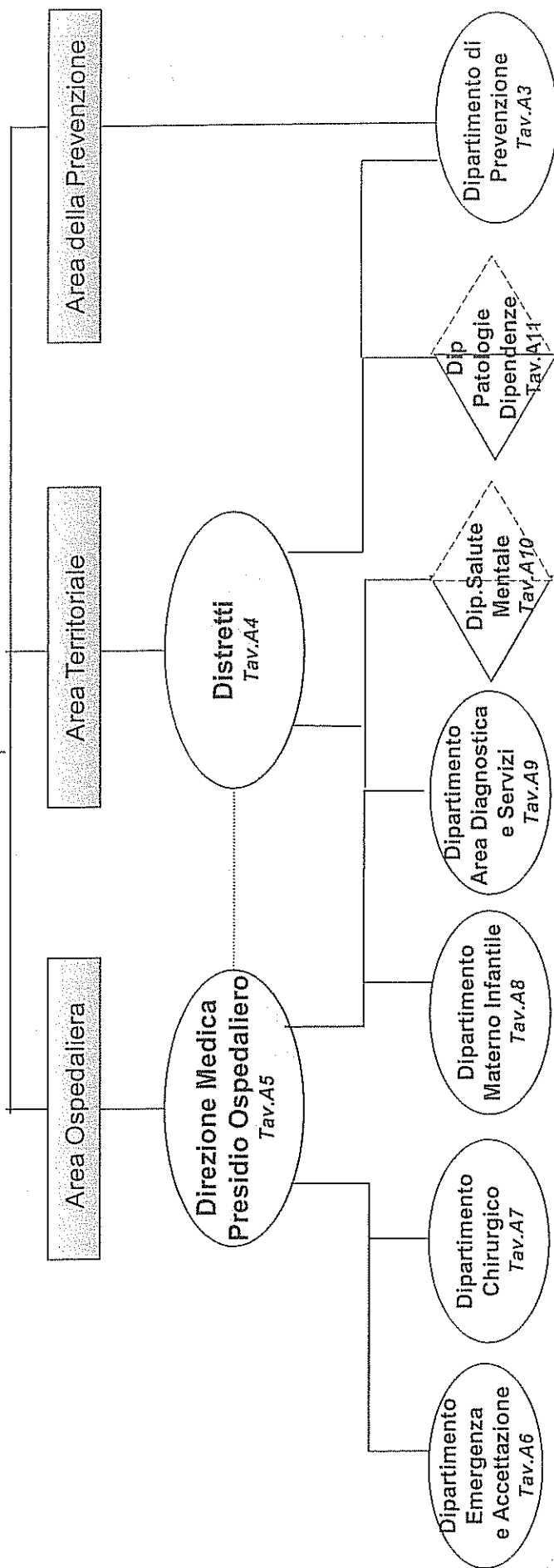
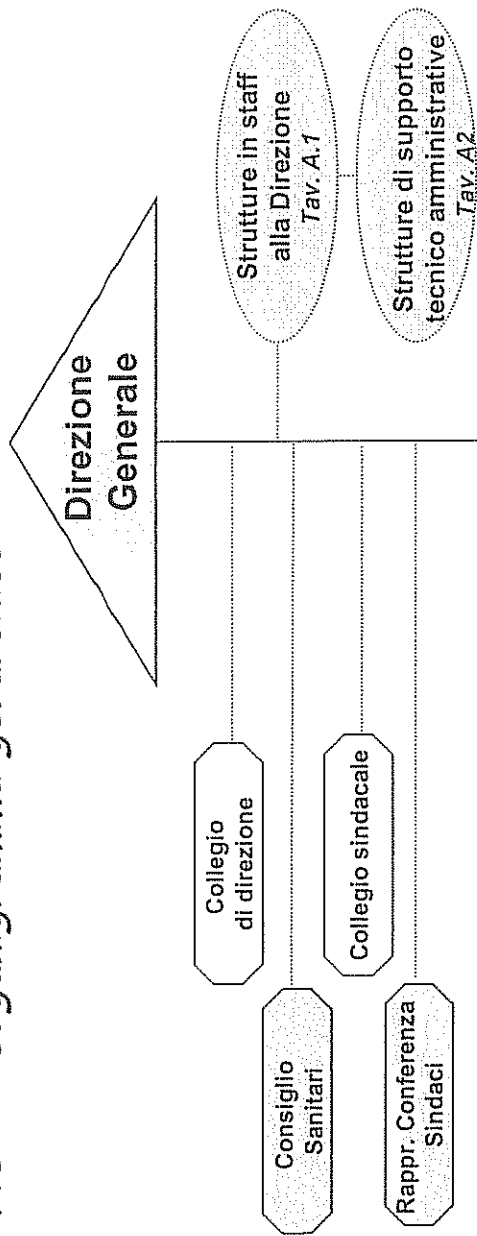
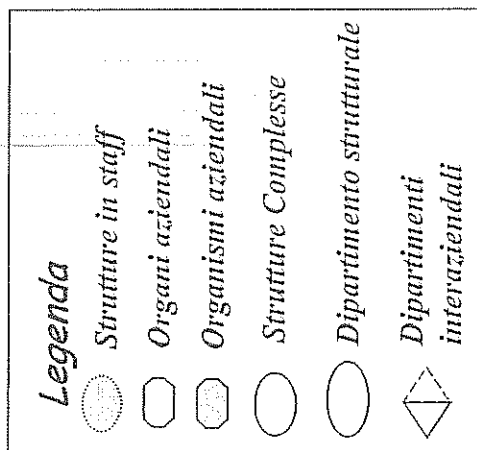
A.S.L. NO – NOVARA

## Allegato A1

*Rappresentazione iconografica*

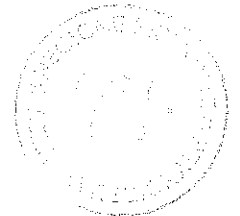
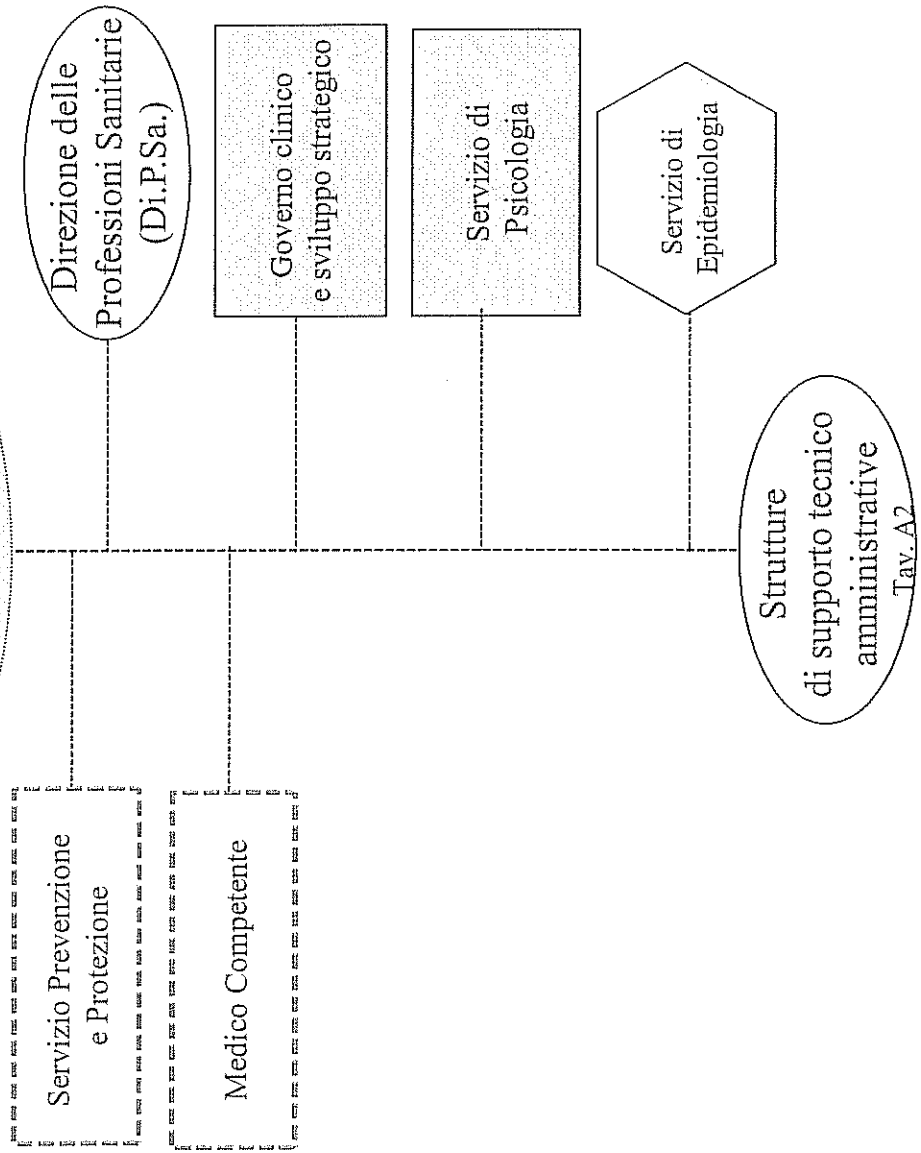
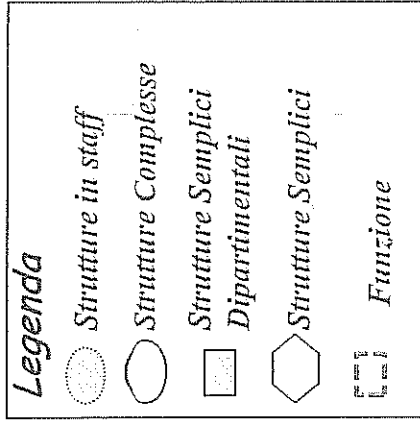


A- ASL "NO" - Organigramma gerarchico

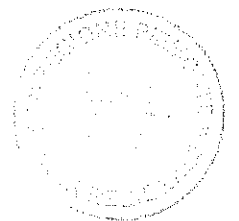
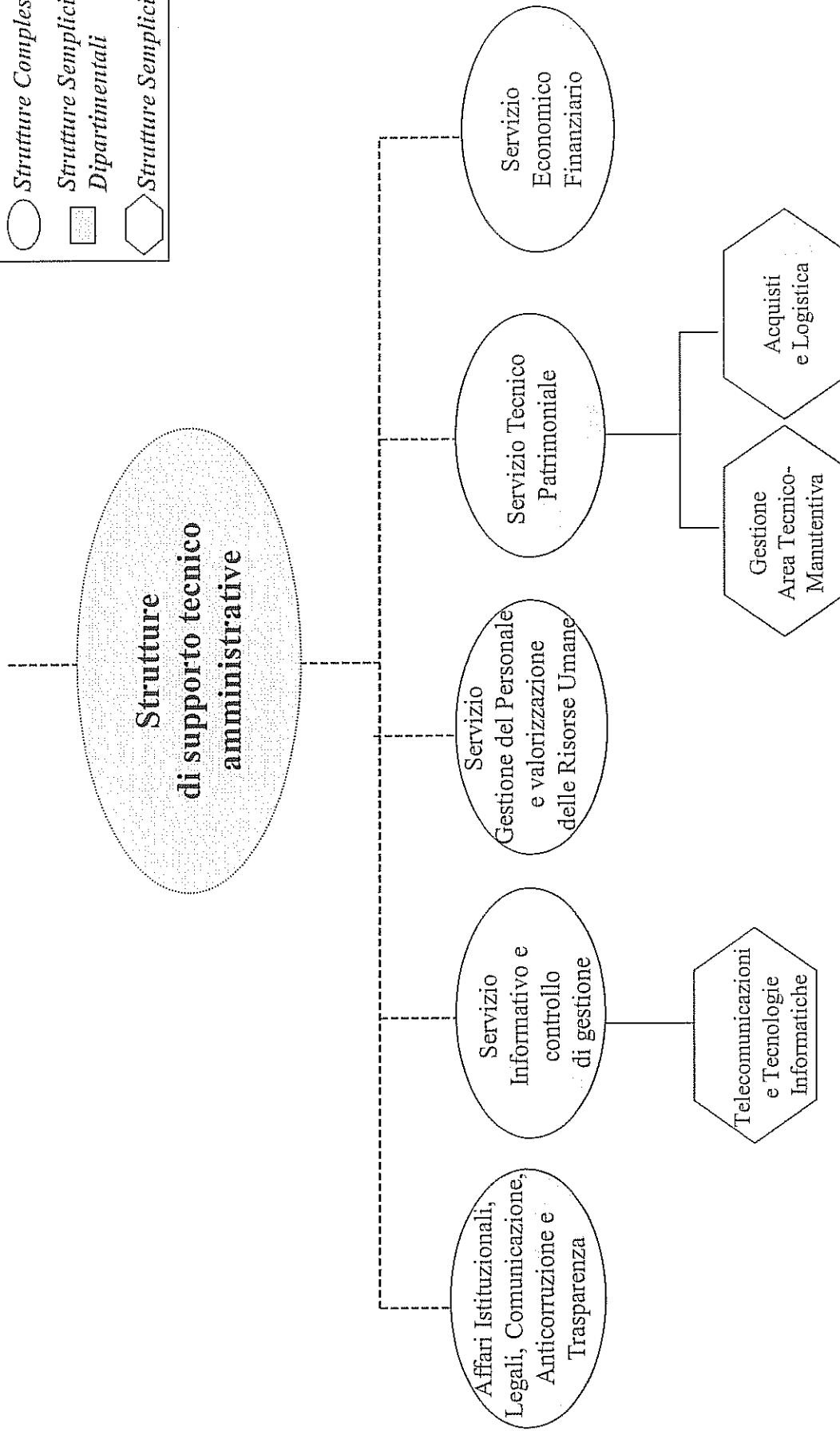
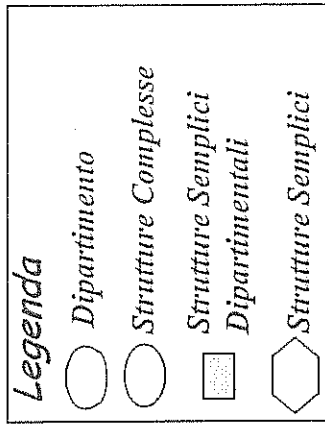


# ASL "NO" - Strutture in Staff alla Direzione Generale

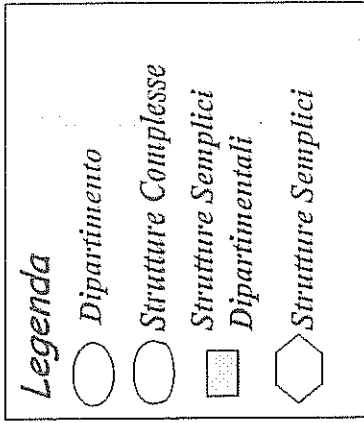
77 2 29 OTT. 2015



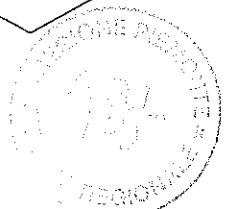
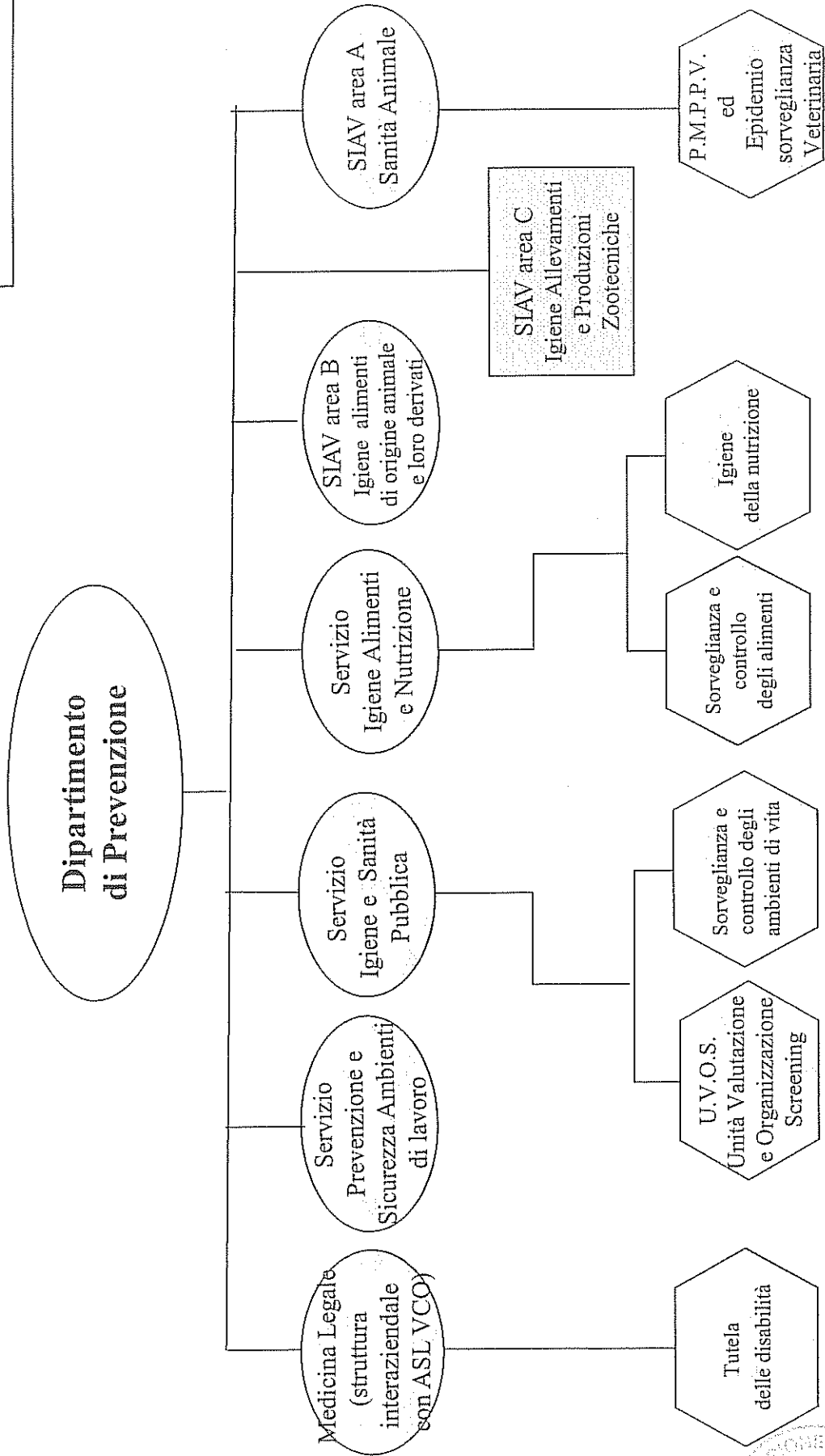
*ASL "NO" - Strutture di supporto tecnico amministrative*



ASL "NO" - Dipartimento di Prevenzione

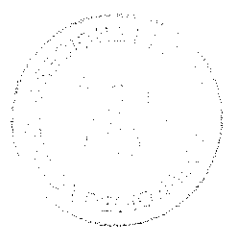
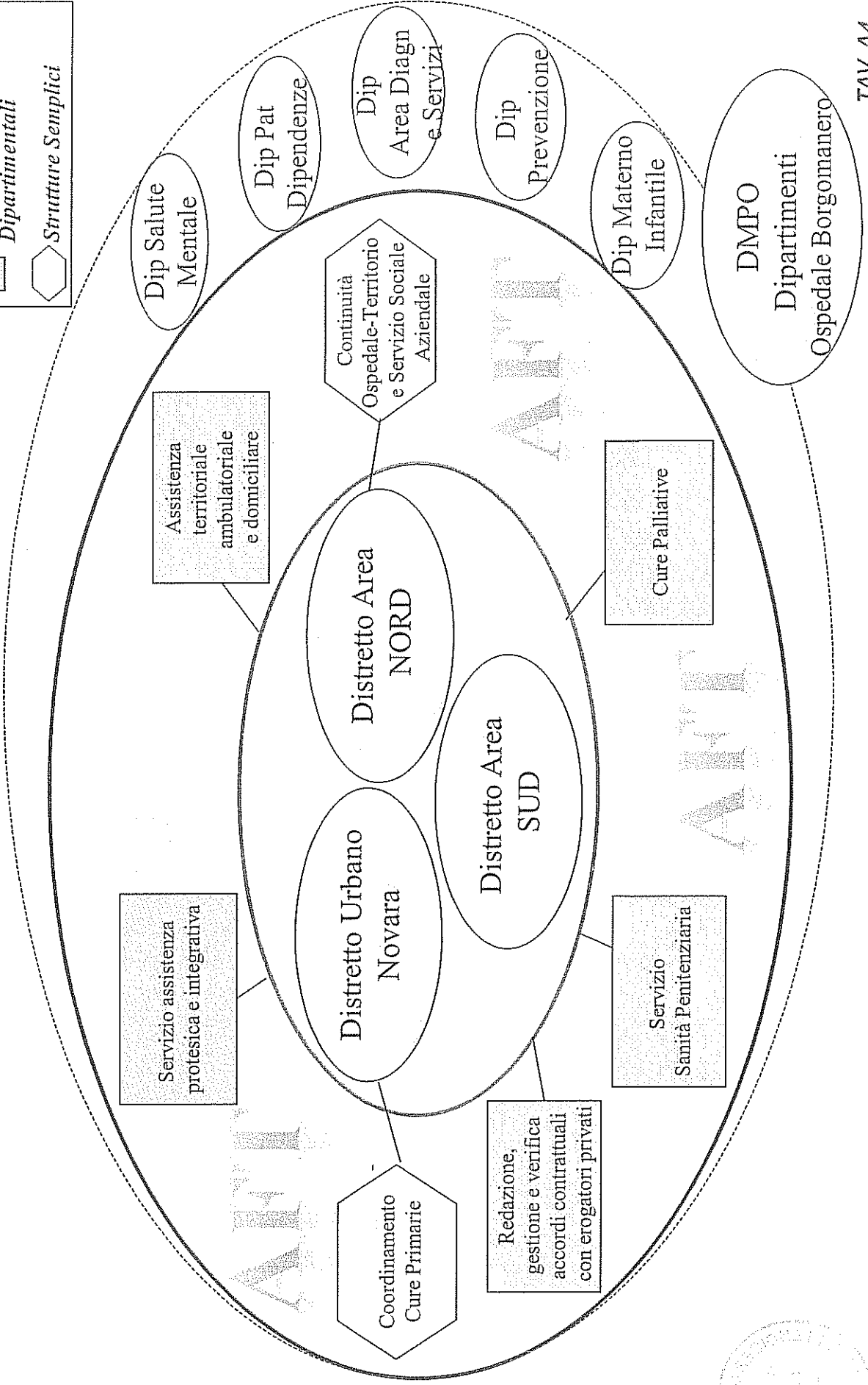
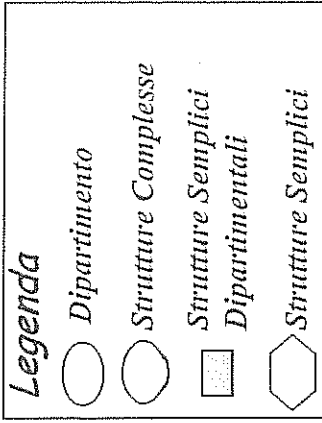


Area della PREVENZIONE



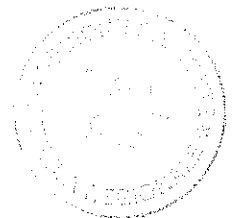
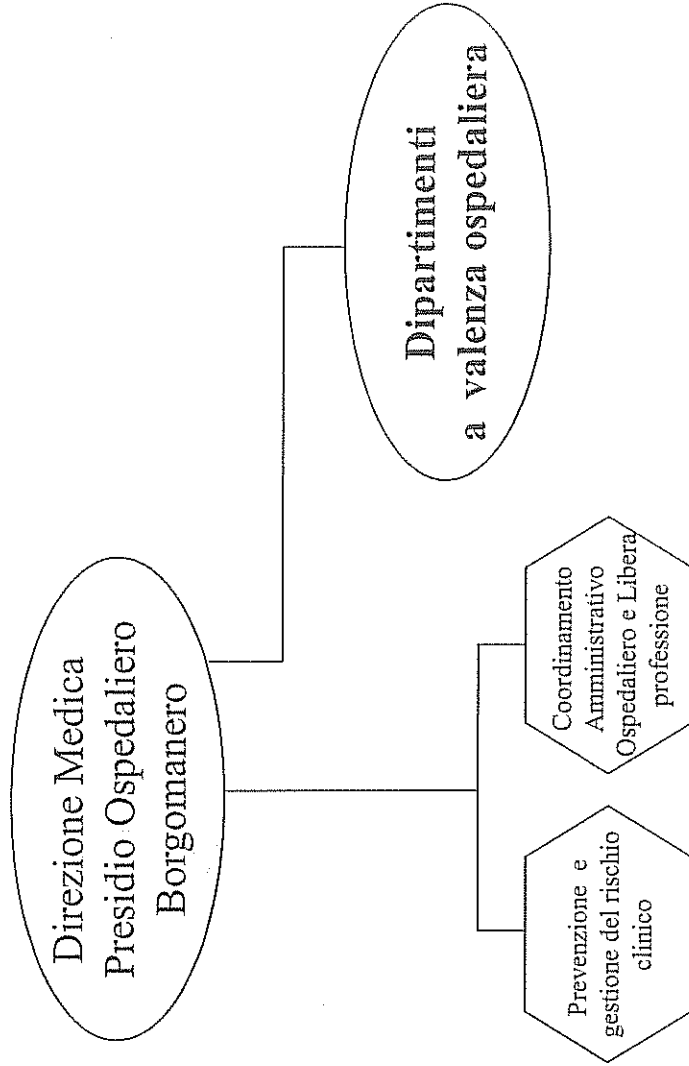
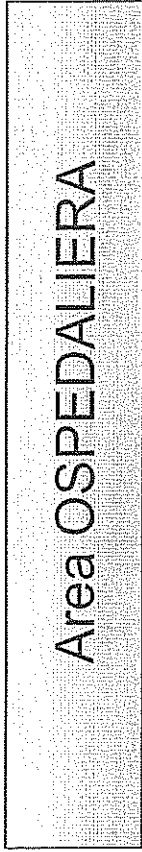
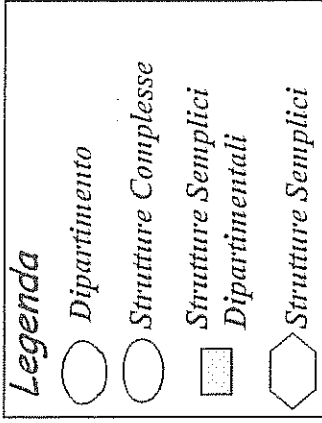
ASL "NO" - Distretti

Area TERRITORIALE



ASL "NO" - Direzione Medica di Presidio Ospedaliero

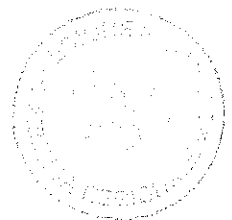
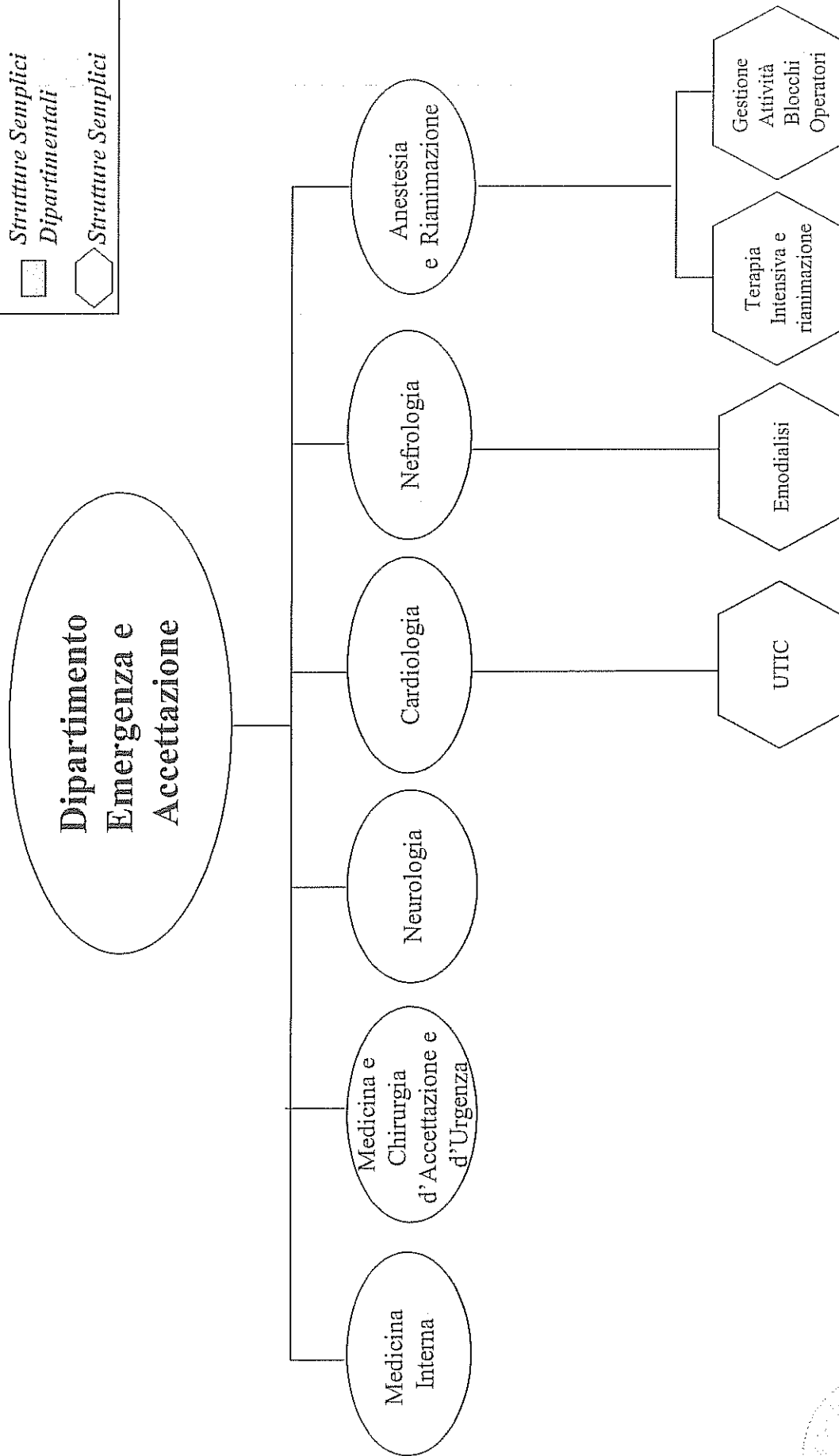
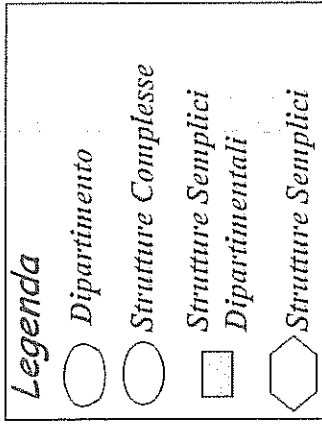
07 2 28 OTT. 2015



ASL "NO" - Dipartimento Emergenza e Accettazione

972

29 OTT. 2015

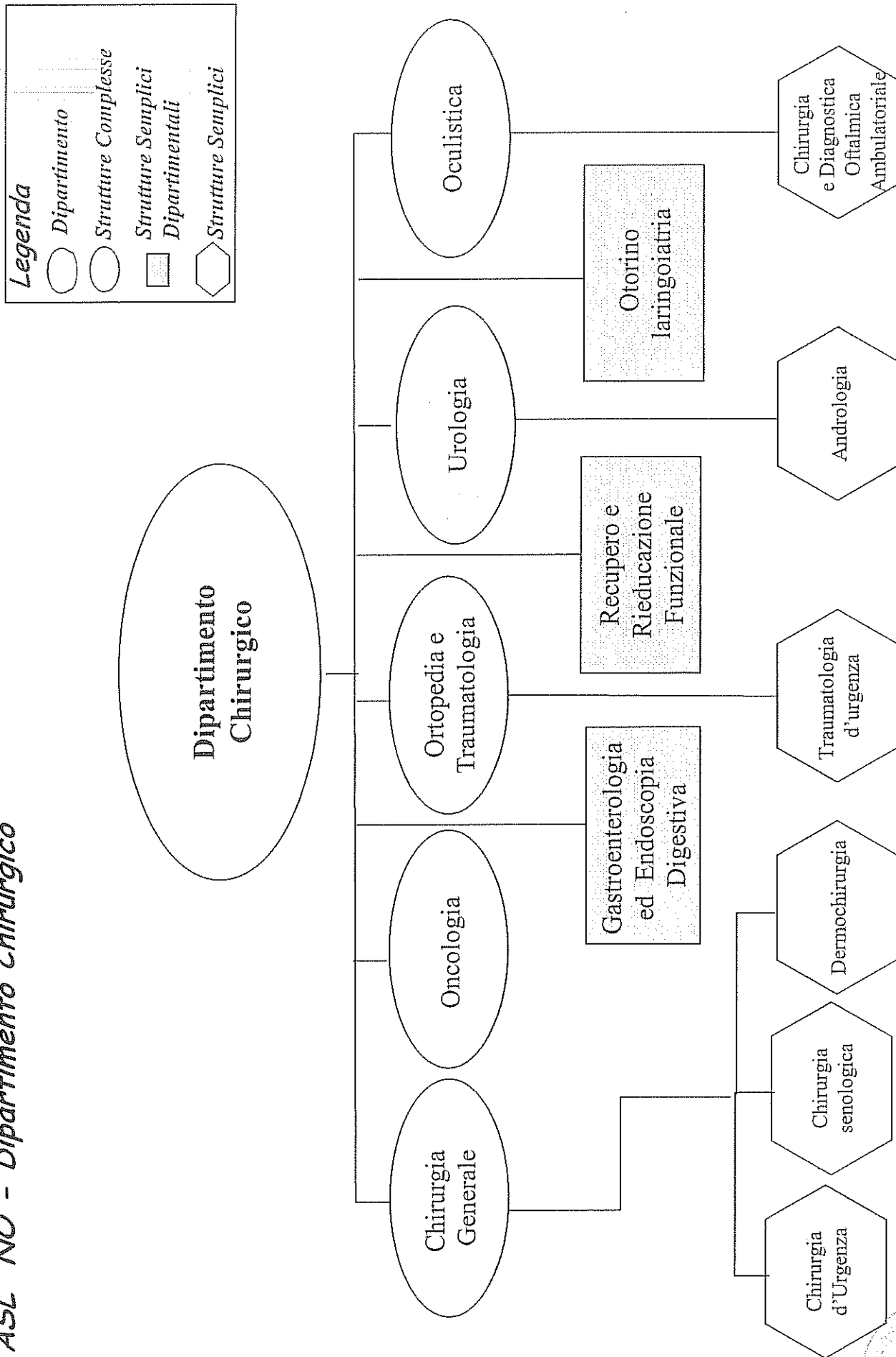


TAV. A.6



ASL "NO" - Dipartimento Chirurgico

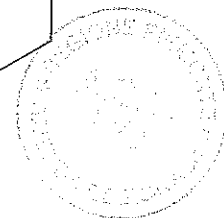
772 29 OTT. 2015



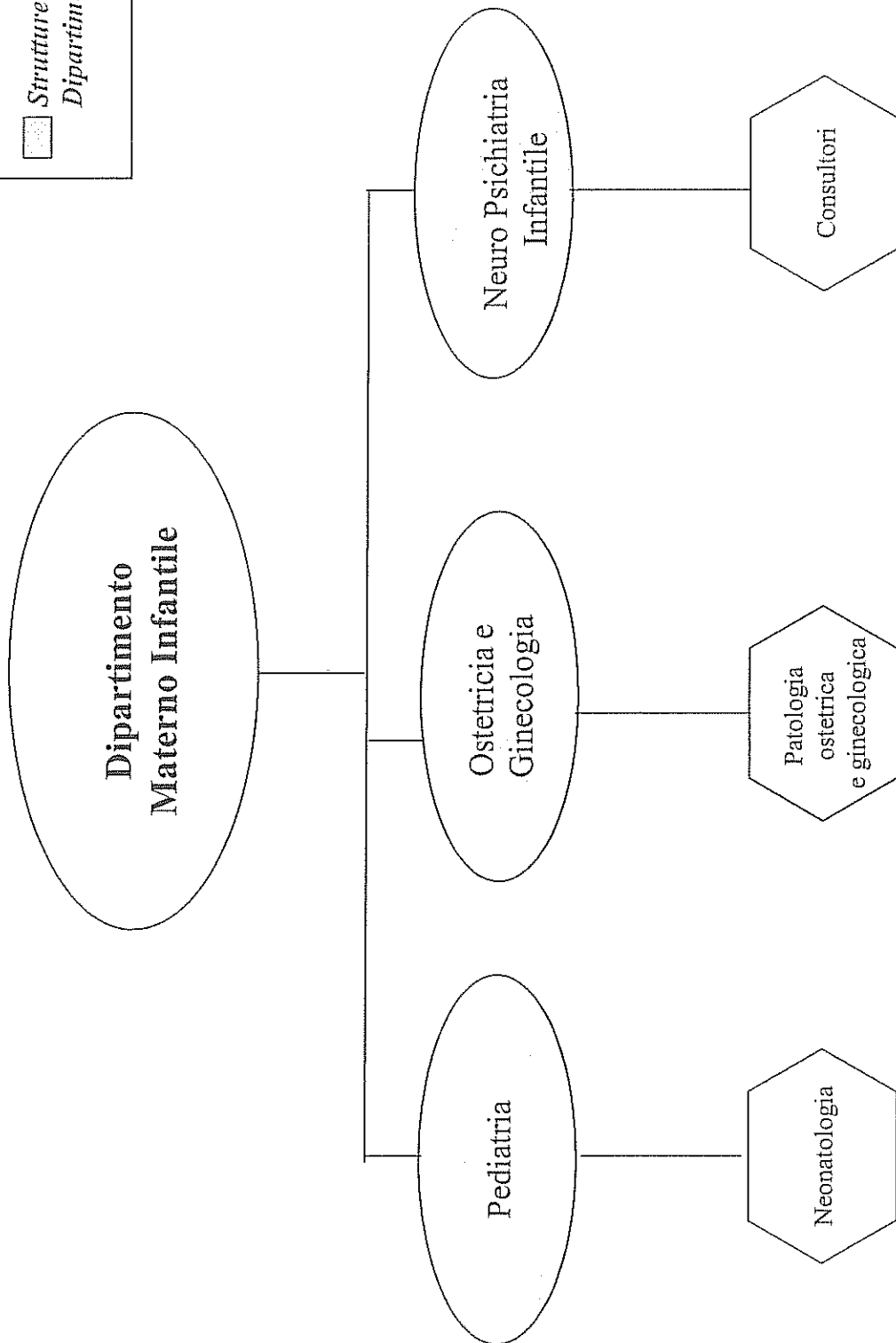
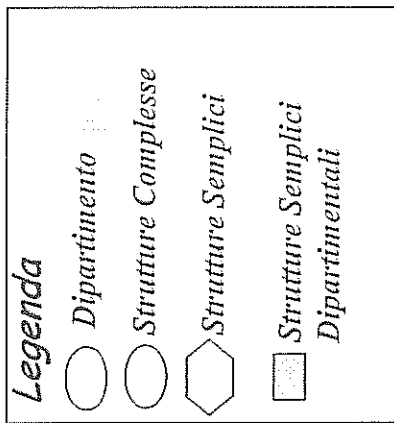
Legenda

- Dipartimento
- Strutture Complesse
- Strutture Semplici Dipartimentali
- ▨ Strutture Semplici
- ⬡ Strutture Semplici

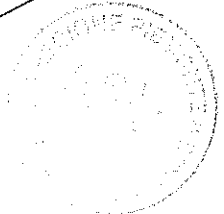
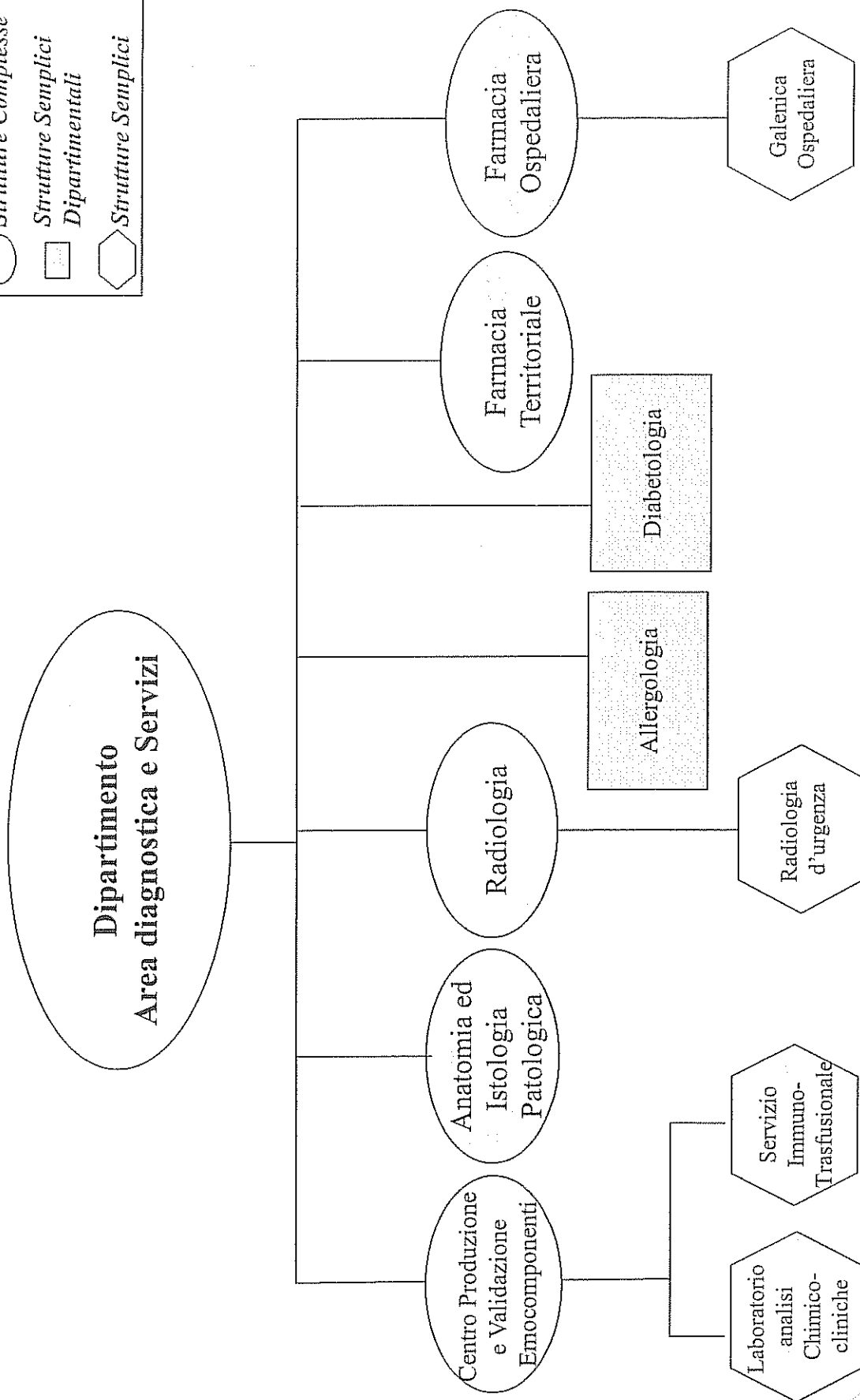
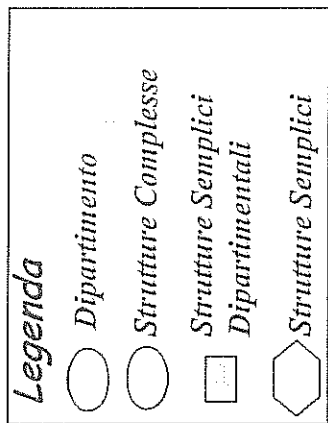
TAV. A7



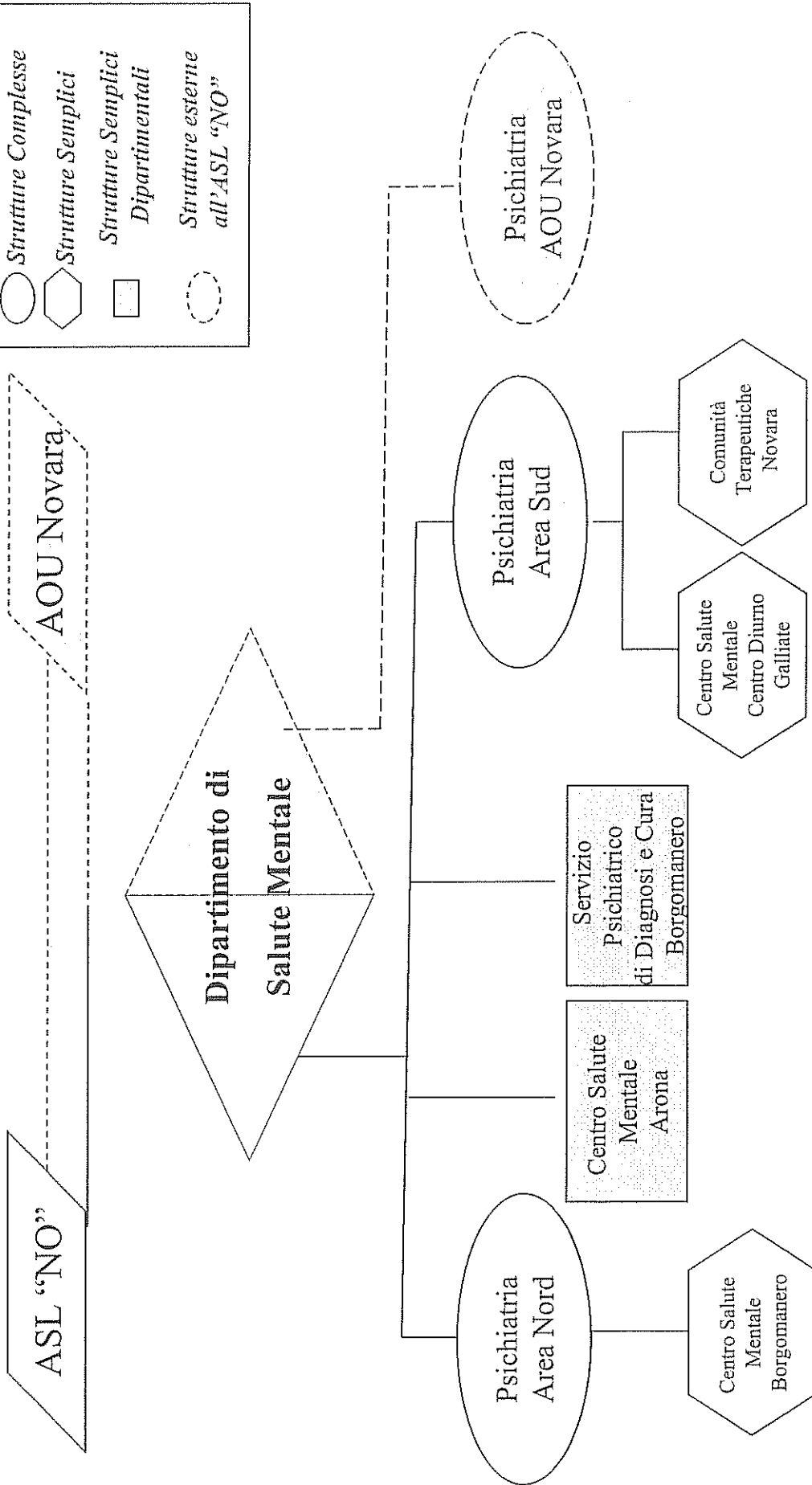
ASL "NO" - Dipartimento Materno Infantile



ASL "NO" - Dipartimento Area Diagnostica e Servizi



# ASL "NO" - Dipartimento di Salute Mentale - DSM (Dipartimento Interaziendale strutturale ASL NO - AOU Novara)

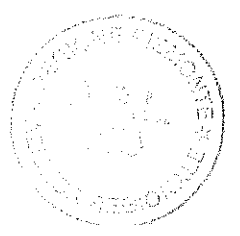
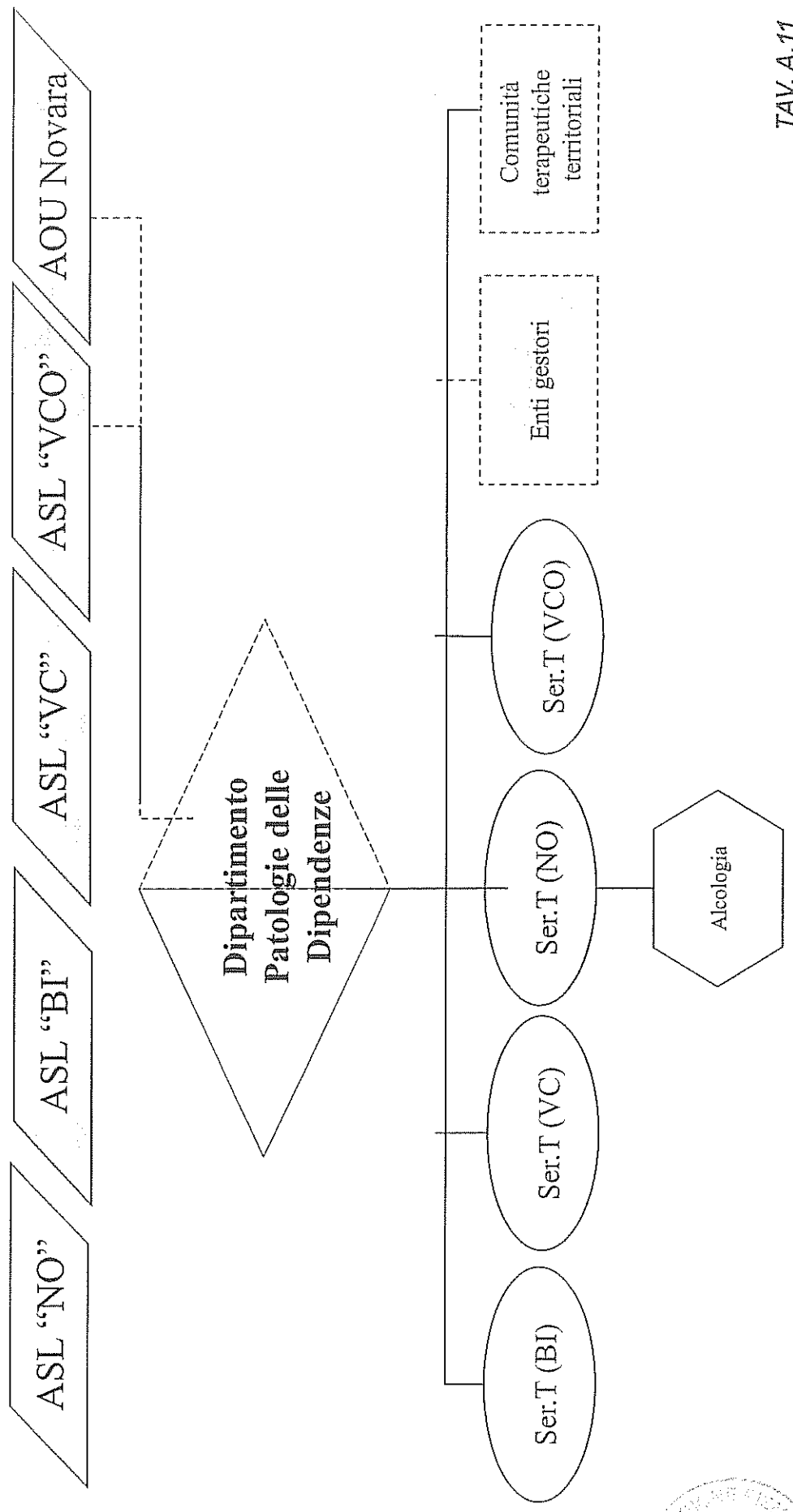
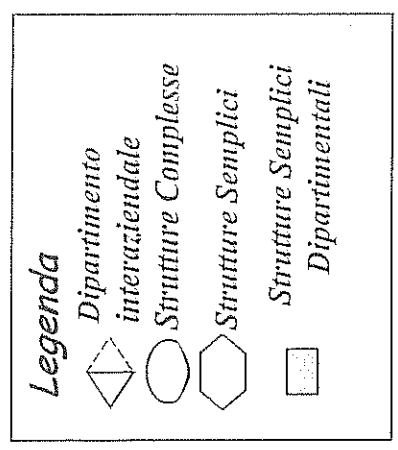


**Legenda**

- Dipartimento interaziendale
- Strutture Complesse
- Strutture Semplici
- Strutture Semplici Dipartimentali
- Strutture esterne all'ASL "NO"





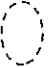


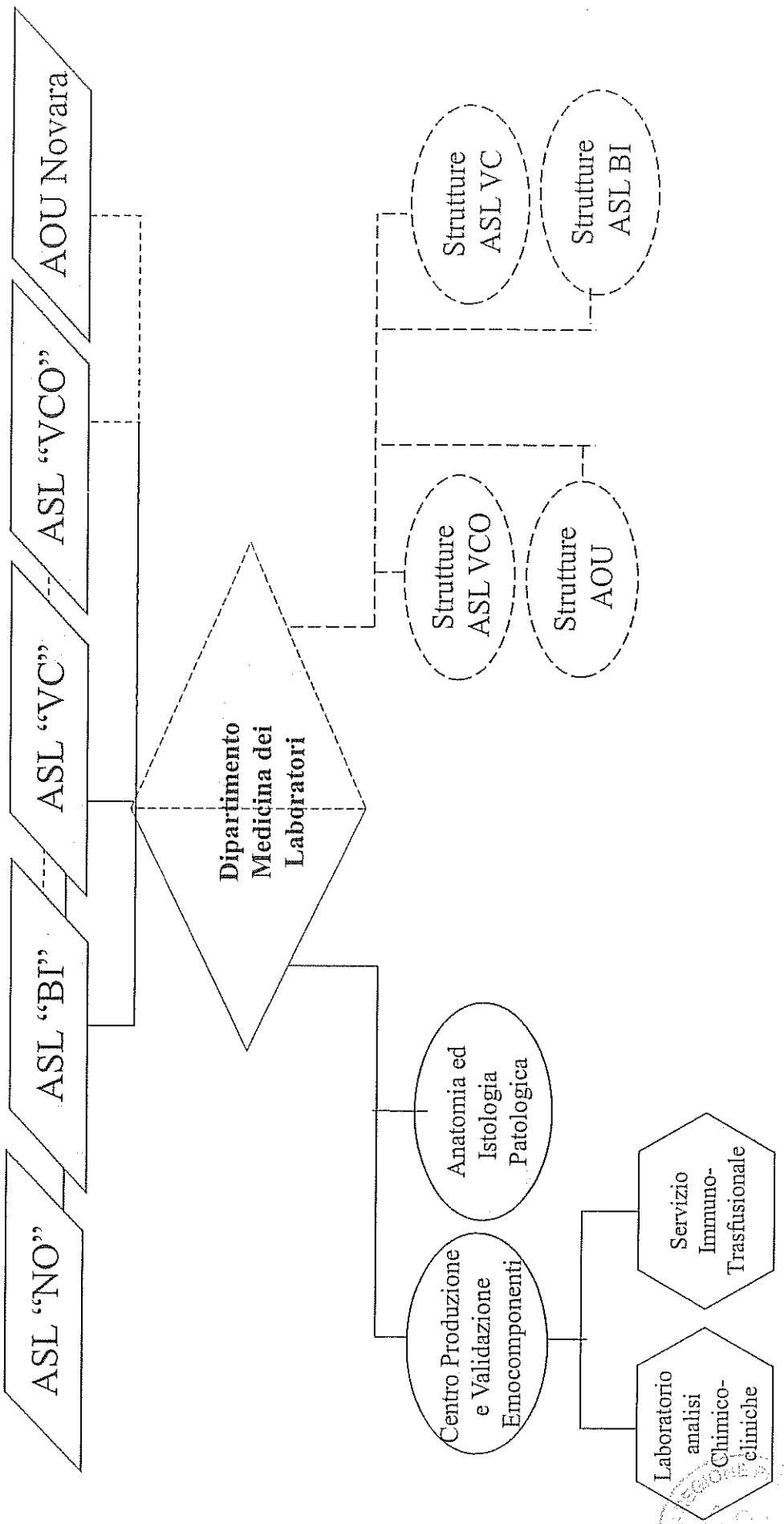
# ASL "NO"-Dipartimento Patologie delle Dipendenze Dipartimento Interaziendale strutturale ASL NO - BI - VC -VCO



**ASL "NO" - Dipartimento Medicina dei Laboratori**  
**Dipartimento Interaziendale funzionale AOU - ASL NO - BI - VC - VCO**





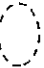
**Legenda**

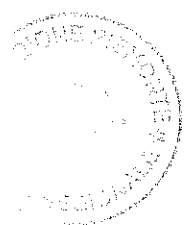
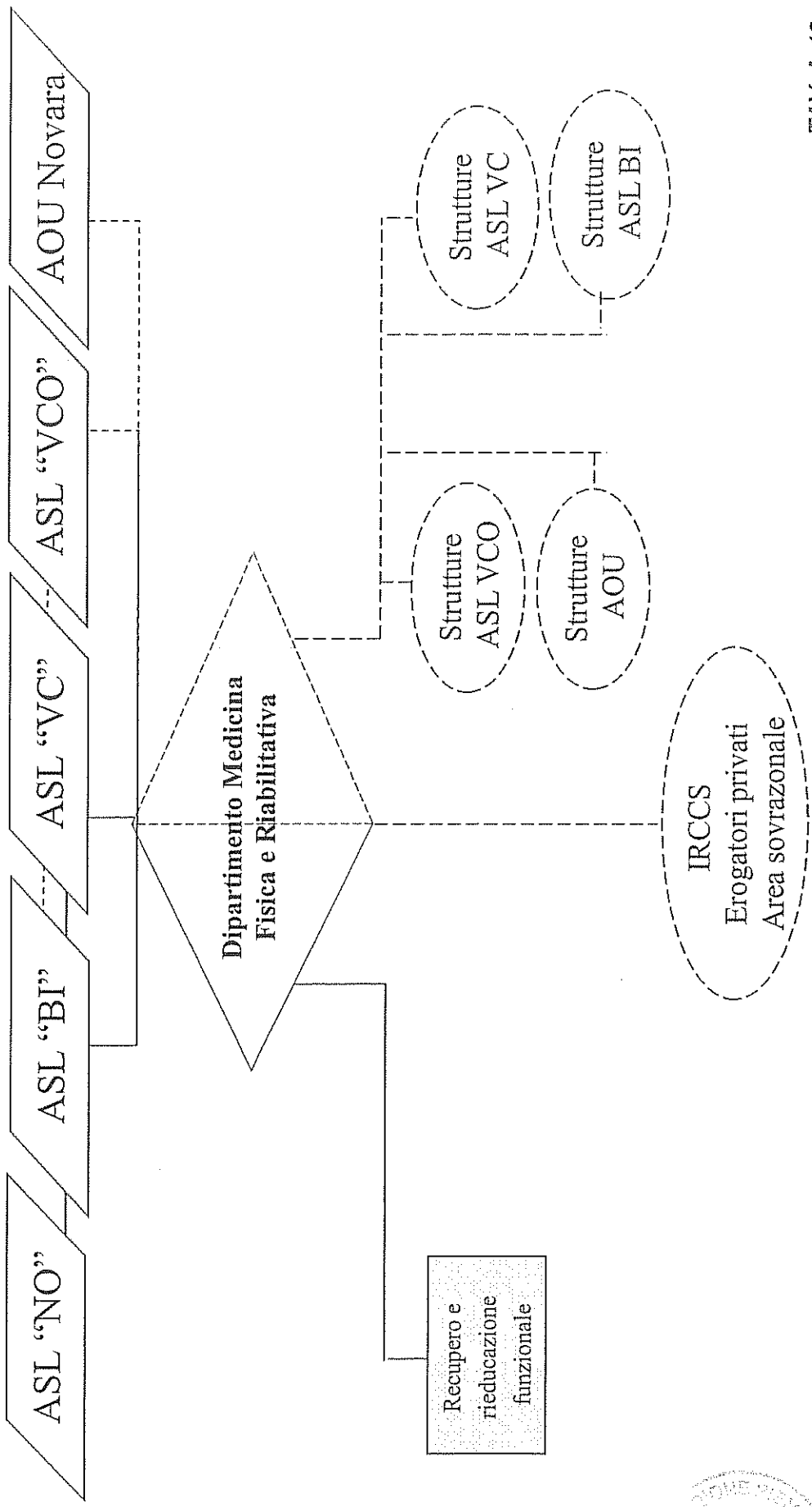
-  Dipartimento interaziendale
-  Struttura complessa
-  Struttura Semplice Dipartimentale
-  Struttura semplice
-  Strutture esterne all'ASL "NO"



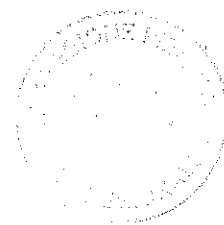
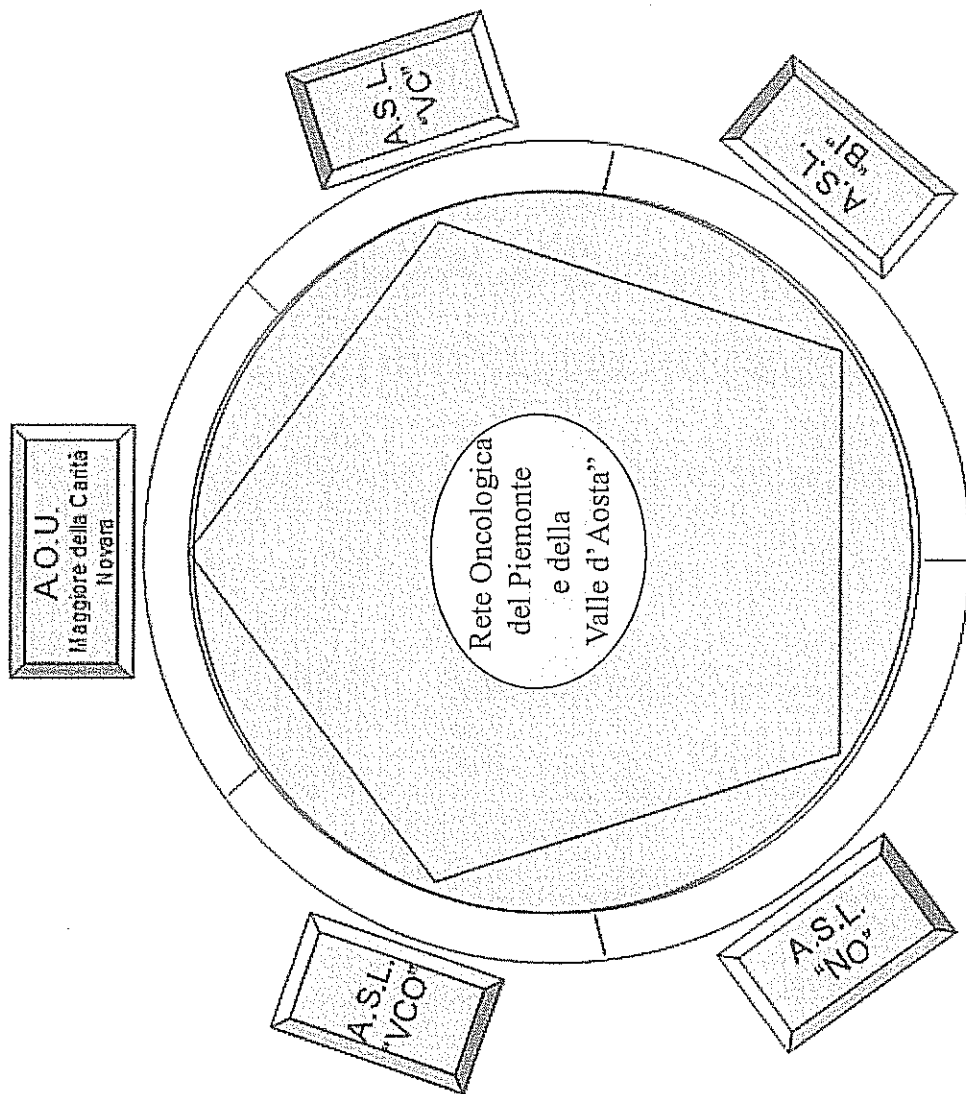
**ASL "NO" - Dipartimento Medicina Fisica e Riabilitativa**  
**Dipartimento Interaziendale funzionale transmurale AOU-ASL NO-BI-VC-VCO**

**Legenda**

-  Dipartimento interaziendale
-  Struttura complessa
-  Struttura Semplice
-  Dipartimentale
-  Strutture esterne all'ASL "NO"



*Dipartimento funzionale interaziendale ed interregionale della Rete Oncologica del Piemonte e della Valle d'Aosta*





77 2 29 OTT. 2015

*Dipartimento Interaziendale 118*

